

oh what a night!
PROM 2013

MALL OF AMERICA.



THE ROYAL COURT

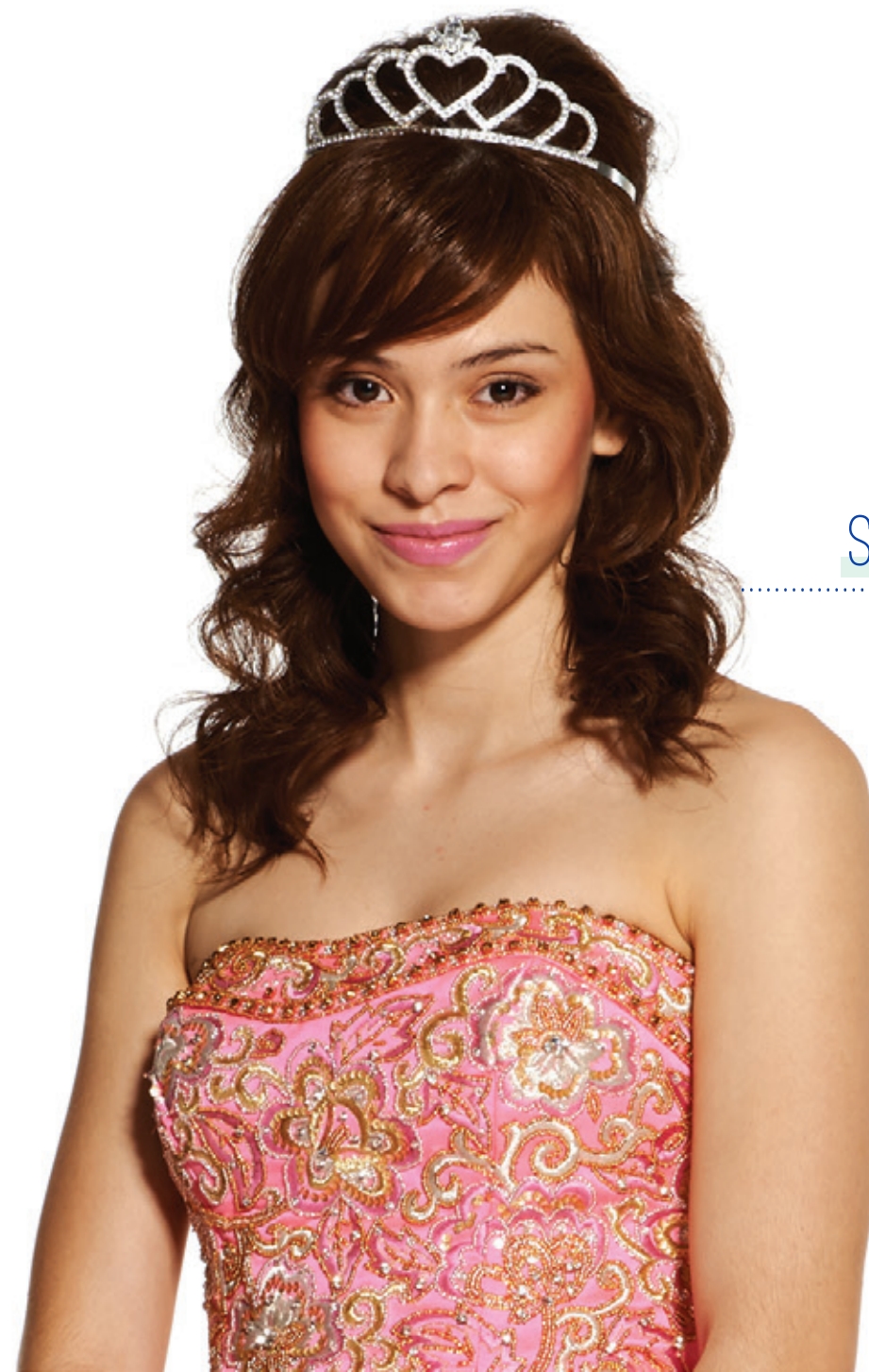
All hail the king + queen

Shimmer while you shimmy on the dance floor in endless layers of twirl-worthy tulle, embellished, beaded bodices + majestic statement necklaces. Elegance + class are always top priority among members of the royal court.

Patent Mint Pumps: Steve Madden, Top Hat: Men's Wearhouse, Necklace: Henri Bendel, Flower: Claire's, Bangles: Macy's, Earrings: Bettie Page Clothing



TOP IT OFF!



STRAPLESS + BRIGHT



AUDACIOUS ACCENTS



SHARP SUIT



TWIRL-WORTHY TULLE

Get The Look

- Blue Feather Gown: Glitz!
- Strapless Sequin Dress: Deb
- Glass + Stone Necklace: Banana Republic
- Tuxedo, Top Hat + Shoes: Men's Wearhouse
- Pink A-Line Gown: Glitz
- Purple One-Strap Dress; Macy's
- Green Earrings + Bracelet: Macy's

SCHOOL OF FROCK

For the rock-stars

The rock-star's look is always camera-ready - pairing edgy hints of leather, daring animal prints + loads of black with gritty-but-glam accessories, a killer hairdo + shoes that add just the right amount of drama. Uneducated DJ's be warned: this crowd's ear for music is as fierce as their striking style.

LIVELY IN LEATHER



Leather Jacket:
A|X Armani Exchange



SPIKED + STUDDED

FLASHY ANIMAL PRINTS



Get The Look

Black Embellished Dress + Bangles: Macy's
 Black Studded Boots: Steve Madden
 Leopard Dress: Nordstrom
 Silver Bracelet: A|X Armani Exchange
 Patent Mint Pumps: Steve Madden
 Men's Black Tie, Shirt + Pants: A|X Armani Exchange
 Men's Patent Converse: Men's Wearhouse
 Black Strapless Gown: Caché

PATENT LEATHER HIGH-TOPS



SHADES OF RED



Studded Boots: Steve Madden, Bangles: Macy's,
Red Glasses: Forever 21, Black + Gold Pumps:
Steve Madden, Suspenders: Men's Wearhouse,
Gloves: Bettie Page Clothing, Red Leather Bow:
American Apparel, Black Flower: Claire's, Black
Flower with Feather: Bettie Page Clothing, Silver
+ Black Bracelet: A|X Armani Exchange

Get The Look

Red Lace Dress: Deb
Black Short Gloves: Bettie Page Clothing
Gold + Black Pumps: Steve Madden





BELTS + BOWS

RETRO A GO-GO

Once Upon a Time

Suave + polished is the debonair time-traveling man - his lady? Classy, elegant + sophisticated in retro-fab dresses + timeless accents that give off modern-vintage appeal.

Get The Look

Pink Dress, Earrings + Clutch:
Bettie Page Clothing
Silver Pumps: Steve Madden
Lace + Flower Dress: Deb
Art Deco Earrings: Henri Bendel
Peep-Toe Heels: Macy's

FLORAL PATTERNS



BEADING + LACE DETAILS

Get The Look

Mint + Lace Dress: Macy's
Pink Clutch + Gloves:
Bettie Page Clothing
Gold Pumps: Macy's
Ring: Banana Republic
Men's 3-Piece Suit + Shoes:
Banana Republic
Flower Feather: Bettie Page Clothing
One Shoulder Dress: Caché
Pearl + Silver Necklace:
Banana Republic





Mint Clutch: Banana Republic, Gold Heels: Macy's, Stacking
Bow Rings: Henri Bendel, Feather Flower: Bettie Page Clothing,
Orange Tie: Banana Republic, Brooch Necklace: Banana
Republic, Art Deco Earrings: Henri Bendel

GOODY GOODY GUMDROPS

A little geek + a lot of chic

Cap sleeve sugar + beaded, sequin spice are the pretty-in-pink girl's ticket to sweet style that's cute to boot! Add signature geek-chic accessories (think bows, lace + knee highs) to complete the look.



Get The Look

Men's Look: Men's Wearhouse
Men's Dress Shoes: Dr. Martens
Blue Lace Dress, Pink Crinoline,
Belt + Shoes: Bettie Page Clothing
Mint Bracelet + Clutch:
Banana Republic

CUTE IN CAP SLEEVES

Get The Look

Pink Babydoll Dress: Glitz!
Oxfords: Steve Madden
Black + Striped Dress: Macy's
White + Silver Wedges:
Steve Madden
Tulle + Sequin Dress: Deb



LOVELY PEARLS

RUFFLED SKIRTS



ARTSY ALLURE

Boho-chic with a uniquely you twist

Whimsical is the playful prom-goer dressed in effortless, floating layers paired with loose, flowing locks + loads of faux flora. Pile on bangles + rings in complementing colors for a boho-chic look that's just your style.

NATURAL BEAUTY





BOLD + BRIGHT



Get The Look

Tulle Dress, Geode Necklace + Gold Bangles: Macy's
 Floral Boots: Dr. Martens
 Men's Jeans, Belt, Tie + Shirt: Banana Republic
 Men's Shoes: Dr. Martens
 Mint Beaded Dress: Caché
 Brooch Necklace: Banana Republic
 Floral Headband: Claire's

LAYER ON BANGLES



Get The Look

White Sheer Dress: Iola
 Sandals: Steve Madden
 Daisy Crown: Claire's

FLORAL BOOTS

HAUTE HATS



ROSY CHEEKS

The night of your dreams just got even dreamier...
DANCE THE NIGHT AWAY ON MOA™

**ENTER FOR A CHANCE TO WIN
 THE ULTIMATE PROM SWEEPSTAKES**

Valued at over \$1,000* at facebook.com/mallofamerica

One Grand Prize Winner will receive:

- A Prom Dress from Glitz
- Tux Rental from MWTux
- Dinner for up to 8 people at Twin City Grill
- Hair for you + 1 at Progressions Salon
- \$100 Mall of America® Gift Card for Shoes + Accessories

*See Official Rules at www.facebook.com/mallofamerica

Striped Clutch; Henri Bendel,
 Pink Pumps: Bettie Page
 Clothing, Bracelets: Henri
 Bendel, Pink + Crystal
 Earrings: Bettie Page Clothing,
 Yellow Necklace: Banana
 Republic, Green Bow Belt:
 Bettie Page Clothing, Blue
 Bow: Bettie Page Clothing



of course we need to say...
A SPECIAL THANK YOU TO

NORDSTROM

CACHE

★macy's

Bettie Page

lola

M
MEN'S WEARHOUSE

STEVE
MADDEN

Dr. AirWair
Martens

HENRI BENDEL
NEW YORK

AX ARMANI EXCHANGE

BANANA REPUBLIC

blåst
BLOW • DRY • BAR

GLITZ!
MALL OF AMERICA

deb

Hair + make up provided by Blast Blow Dry Bar. Hair products
donated by Kevin Murphy.



High-Low Dress: Nordstrom
Necklace: Henri Bendel
Patent Mint Pumps: Steve Madden