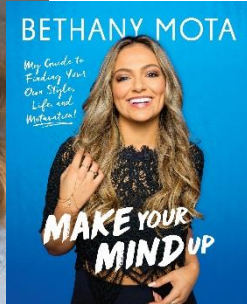
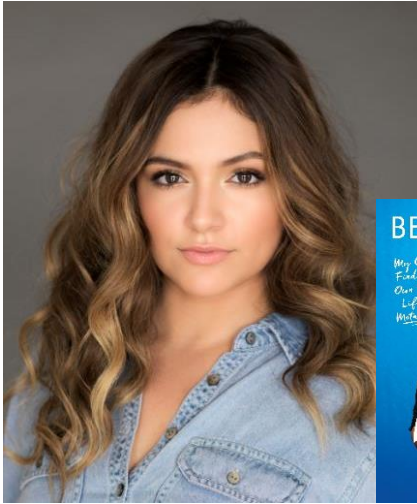


MALL OF AMERICA



Bethany Mota

BOOK SIGNING

SUNDAY, JUNE 18
1 P.M. | ROTUNDA

OFFICIAL EVENT GUIDELINES

1. You must have a Mall of America® issued wristband in order to enter the autograph line. A limited number of wristbands will be available in the Rotunda beginning at 11 a.m. **Wristbands will be distributed on a first come, first served basis.**
2. The time at which you line up is at your discretion. There will be a holding line near the Rotunda if arriving prior to 11 a.m.
3. In order to get a Mall of America wristband, you must purchase a copy of the book “**MAKE YOUR MIND UP**” from the Barnes & Noble kiosk in the Rotunda on the day of the event. Books will be available for sale beginning at 11 a.m. on Sunday, June 18. Showing books previously purchased from other locations will not get you a wristband.
4. At point of sale, each guest will simply receive a receipt. A pre-signed book will be given to the guest as they exit the stage after meeting Bethany. Guests must show their receipt + wristband to get the book.
5. Wristbands are non-transferrable. Each person in your party must be present to receive a wristband. You may not pick up wristbands for another member of your party. People wearing wristbands that have been tampered or altered with will not be allowed through the autograph line. No exceptions.
6. Adults accompanying minors do not need a wristband to enter the autograph line.
7. No cell phones or personal photos will be allowed. Each wristbanded guest will have a professional photo taken with Bethany that will be retrievable online after the event. Only one person per photo will be allowed.
8. All books will be pre-signed by Bethany. No additional personalization will be allowed.
9. Due to time limitations, no additional merchandise can be signed.
10. When you enter the meet + greet line, please remain single file. You must stay in line to keep your place. You may leave the line to use the restroom or get food for a short period of time. One person in your party must stay in line at all times.
11. If you choose to leave for an extended period of time, you must go to the end of the line when you return.
12. No chairs, blankets, pillows, strollers, etc. will be allowed in the line. All bags are subject to search.
13. A special needs signing area will be available for wristbanded guests. If needed, each special needs guest can bring one additional person to this area. Please visit the Mall of America entry table located in Southeast Court upon your arrival, and you will be escorted into this area. Space will be limited and will be filled on a first come, first served basis.

Guidelines are subject to change at any given time at the discretion of Mall of America management for the safety and well being of our guests and tenants. Those who do not comply with event signing guidelines may not be able to receive an autograph. Please visit www.mallofamerica.com periodically before the event for updates and changes that may be made to these guidelines.